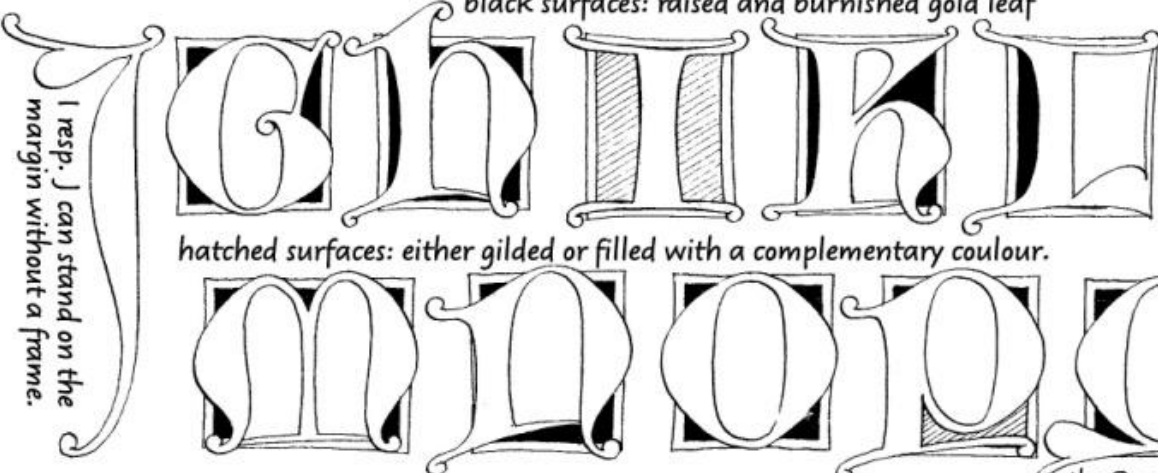


The outlines of lombardic versals for the use of painted initials

in the late gothic „Laubwerk“-style (15th century)



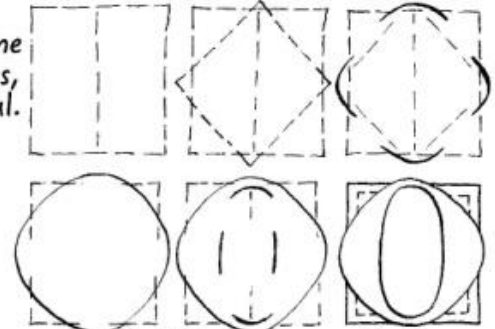
black surfaces: raised and burnished gold leaf



hatched surfaces: either gilded or filled with a complementary colour.

CONSTRUCTION OF THE CIRCULAR SHAPES:

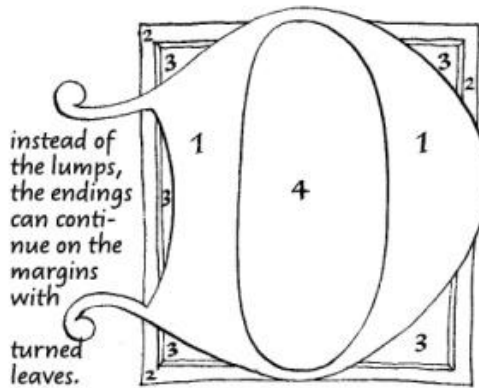
the outer outline refers to a rhombus, the inner to an oval.



make the letters pass over the frame.

SUGGESTED DIMENSION; colour layout:

the Q queue can turn left in order to avoid bothering the text.



proportion of the field:
5:6 to 1:1; M and W
can be larger.

- 1 letter surface
- 2 frame with inner facet
- 3 field between letter and frame (gold leaf)
- 4 ground (miniature or arabesque)

instead of the lumps, the endings can continue on the margins with turned leaves.

